

**STRA8 Antibody**  
**Mouse Monoclonal Antibody (Mab)**  
**Catalog # AM2091a****Specification**

---

**STRA8 Antibody - Product Information**

|                   |                             |
|-------------------|-----------------------------|
| Application       | WB,E                        |
| Primary Accession | <a href="#">Q7Z7C7</a>      |
| Other Accession   | <a href="#">NP_872295.1</a> |
| Reactivity        | Human, Mouse                |
| Host              | Mouse                       |
| Clonality         | Monoclonal                  |
| Isotype           | IgM                         |
| Antigen Region    | 31-59                       |

**STRA8 Antibody - Additional Information****Gene ID** 346673**Other Names**

Stimulated by retinoic acid gene 8 protein homolog, STRA8 {ECO:0000312|EMBL:AAP471631}

**Target/Specificity**

This STRA8 antibody is generated from mice immunized with a KLH conjugated synthetic peptide between 31-59 amino acids from human STRA8.

**Dilution**

WB~~1:8000

E~~Use at an assay dependent concentration.

**Format**

Mouse monoclonal antibody supplied in crude ascites with 0.09% (W/V) sodium azide.

**Storage**

Maintain refrigerated at 2-8°C for up to 2 weeks. For long term storage store at -20°C in small aliquots to prevent freeze-thaw cycles.

**Precautions**

STRA8 Antibody is for research use only and not for use in diagnostic or therapeutic procedures.

**STRA8 Antibody - Protein Information****Name** STRA8 ([HGNC:30653](#))**Function** Meiosis-inducer required for the transition into meiosis for both female and male germ cells. In female germ cells, acts downstream of ZGLP1 as a key effector of the meiotic program: required for premeiotic DNA replication and subsequent events in meiotic prophase. During spermatogenesis, next to its role in meiotic initiation, promotes (but is not required for)

spermatogonial differentiation. In complex with MEIOSIN, directly activates the transcription of a subset of critical meiotic genes playing a central role in cell-cycle switching from mitosis to meiosis.

**Cellular Location**

Cytoplasm {ECO:0000250|UniProtKB:P70278}. Nucleus {ECO:0000250|UniProtKB:P70278}.  
Note=Shuttles between nucleus and cytoplasm. Nuclear export is XPO1-dependent {ECO:0000250|UniProtKB:P70278}

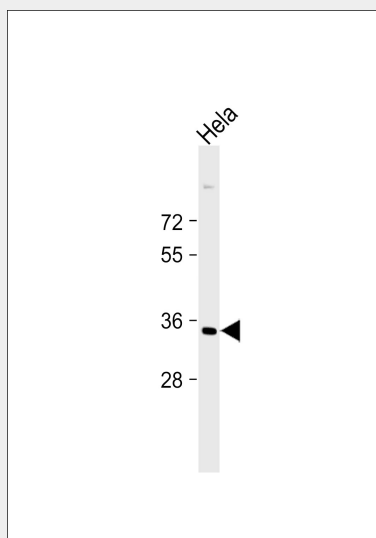
**Tissue Location**

Expressed specifically in testis and fetal ovaries.

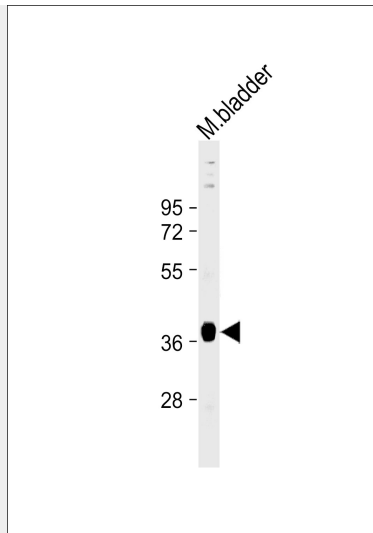
**STRA8 Antibody - Protocols**

Provided below are standard protocols that you may find useful for product applications.

- [Western Blot](#)
- [Blocking Peptides](#)
- [Dot Blot](#)
- [Immunohistochemistry](#)
- [Immunofluorescence](#)
- [Immunoprecipitation](#)
- [Flow Cytometry](#)
- [Cell Culture](#)

**STRA8 Antibody - Images**

"Anti-STRA8 Antibody at 1:2000 dilution + HeLa whole cell lysate Secondary Goat Anti-mouse IgM, (H+L), Peroxidase conjugated at 1/10000 dilution. Predicted band size : 36908 Da Blocking/Dilution buffer: 5% NFD/MTBST."



"Anti-STRA8 Antibody at 1:8000 dilution + mouse bladder lysate Secondary Goat Anti-mouse IgM, (H+L), Peroxidase conjugated at 1/10000 dilution. Predicted band size : 36908 Da Blocking/Dilution buffer: 5% NFDm/TBST."

### **STRA8 Antibody - Background**

This gene encodes a retinoic acid-responsive protein. A homologous protein in mouse has been shown to be involved in the regulation of meiotic initiation in both spermatogenesis and oogenesis, though feature differences between the mouse and human proteins suggest that these homologs are not entirely functionally equivalent. It is thought that this gene may play a role in spermatogenesis in humans.

### **STRA8 Antibody - References**

Le Bouffant, R., et al. Hum. Reprod. 25(10):2579-2590(2010)  
Aston, K.I., et al. Hum. Reprod. 25(6):1383-1397(2010)  
Chen, B., et al. Asian J. Androl. 11(5):557-565(2009)  
Houmard, B., et al. Biol. Reprod. 81(2):438-443(2009)  
Stouffs, K., et al. Verh. K. Acad. Geneesk. Belg. 71(3):115-139(2009)